



providing **DESIGN** assistance,
molding expertise and the
assembly experience for the plastic
components that simply ...
make life better.

 **Commercial Plastics**
DESIGN ASSISTANCE, MOLDING, ASSEMBLY & MORE

COMPANY PRESENTATION

Who we are

- A full-service plastic products manufacturer
- Family-owned business with roots going back to 1940
- Approximately 700 employees
- 5 manufacturing sites - Illinois, Wisconsin, Nebraska & (2) Minnesota
- ISO 9001:2015 Certified & Temp Controlled facilities
- 213 molding machines ranging from 40 to 3300 tons
- 900,000 sq ft of manufacturing and warehouse space



Some places where you will find us



You conserve energy with us:

We produce LED luminaire clusters and housings for low-energy consumption lighting.



You workout with us:

We produce heart rate monitoring housings, cup holders, end caps, and motor housings that go onto treadmills, elliptical, and exercise bikes.



You stay healthy with us:

We produce sharps containers and medical waste containers for hazardous waste disposal and management.



You cook with us: We produce full products and parts for a leading brand of outdoor grilling products.



You stay clean with us: We produce internal components for commercial laundry systems.



You fly with us: We produce tip mandrels for duplicate inlays for commercial airline engines.

Some more places where you will find us



You farm with us: We produce critical components, seating, and housings for the leading agriculture companies.



You revel with us: We produce assemblies, components, and tip applicators for leading beauty products.



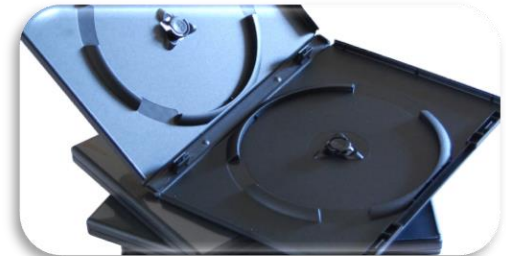
You have fun with us: We produce components, covers, fenders, and seating for the leading outdoor recreational companies.



You are brilliant with us: We produce products having a need for high strength-to-weight, dimensional stability and high heat resistant physical properties for electrical applications.



You are ergo with us: We produce components, armrests, and backrests for leading commercial furniture companies.



You listen with us: We are the U.S. leading manufacturer of media packaging products utilizing fully automated assembly systems.



Our Full-Service Capabilities

Molding Capabilities

- Horizontal and Vertical Injection Molding
- Twin & Two-Shot Injection Molding
- Two Color and Soft-Shot Over Molding
- Three Shot Injection Molding
- Gas Assist Molding – In-house nitrogen compressor
- Insert Molding – Fully Automated
- Structural Foam Low Pressure Molding
- Structural Web Low Pressure Molding
- Automation Work Cells – on/off-line
- Compression/Transfer Molding
- RJG with Edart Process Monitoring
- iMLFUX Process Technology

Decorating & Assembly

- Full Part & Packaging Assembly
- Fully Automated Assembly and Packaging
- In-Mold Labeling & Decorating
- Painting/Shielding – In-house
- Multi-Color Hot Stamping
- Multi-Color Pad Printing
- Gasket – Leak Proof Assembly
- Heat Sealing & Transfer & Adhesive Bonding
- Sonic Welding & Heat Staking
- Kitting and Individual Part Traceability

Research & Development

- Industrial Design and Concept Development
- Form, Visual, and Assembly Concept Design
- Project Management & Sustainable DFM
- In-House Mold Flow Simulation

Quality Management & Certifications

- ISO 9001:2015 Certified
- Corrective and Preventive Action (CAPA) System
- Clean Assembly Environment for FDA/GMP Products
- Metrology, APQP, PPAP, ISIR & DHR
- FARO® Quantum FAROARM® Scanning for complete 3D measurements
- FDA, NSF, UL, & IAPMO Compliant
- IQ, OQ, PQ Validation Protocol

Rapid Prototype & Tool Build Management

- 3D Printing, SLA, SLS & Casting
- Soft and 3D Printed Tooling
- CNC Machining & Scale Models
- Functional & Mechanical Prototypes
- Program Launch Management
- SPE/SPI Standard Mold Design Management

Material Management

- 30 Silos able to store over 2.6 Million lbs.
- Custom Underground Processing System
- Direct Silo to Machine Material Systems
- Material Moisture Analysis
- Railroad Direct Access

Inventory, Logistics & Manufacturing Management

- IQMS – Real Time, EDI & Preventative Maintenance
- Just-in-Time Delivery & Returnable Packaging Management
- Kanban, Dock-to-Stock & Direct Shipment Management
- 5 Manufacturing Facilities Centrally Located in the USA
- 900,000 sq ft of Manufacturing and Warehouse Space

Where we are located



Kenosha,
Wisconsin
150,000sqft

Mundelein,
Illinois
105,000sqft



Waverly,
Nebraska
80,000sqft

Mora,
Minnesota
425,000sqft



Lakeville,
Minnesota
Distribution

Lakeville,
Minnesota
75,000sqft



Commitment to Sustainability



Award-winning community involvement

Supporting/promoting education

Employee engagement

Environmentally conscious

Examples:



Lakeview Technical Academy annual student tour.



Community garden located on CPC Kenosha land.
Maintained by CPC employees

Environmental Sustainability



We are committed to environmental sustainability. Reducing our environmental impact isn't the responsibility of a designated company department or even a cross-functional task force. It exists within each area and is a challenge placed squarely in front of each employee...a true element of CPC's culture.

Evidence of how thoroughly committed our employees are to that culture lies in the number of ways in which we have reduced our environmental footprint.

- Energy efficient lighting using 60% less energy.
- Energy-saving motion sensors for lighting – in both the offices and warehouses
- Ambient light detectors – adjusting the amount of artificial light used based on the amount of natural light available.
- Variable frequency drives on presses, which automatically vary the energy usage depending on the process running. Initial energy savings over the replaced conventional methods is averaging 29%
- Heater bands to insulate, generate and transmit heat more efficiently on injection presses. Early reduction in energy and electrical consumption is averaging 30%.
- Reducing inline air pressure settings when possible
- Using purging compound, creating a 25% reduction in start-up resin waste
- Using over 500 reusable shipping containers

design assistance
molding
assembly
& more

 **Commercial Plastics**

Social & Economic Sustainability



We are committed to social and economic sustainability. We are award-winning with our community involvement, employee engagement and supporting/promoting education. Our employees spread the CPC culture outside the walls of our facilities. We do this with our involvement in over 30 programs within our communities.

- A dedicated community garden on our Wisconsin facility land planted and managed with a local high school, Harborside Academy.
- Lakeview Technical Academy annual student tour
- Our local Fire and Police use our Illinois facility for their annual commercial building rescue training
- Local team sport sponsorships
- Charity team and fundraising events
- Walk for cancer
- Toys for Tots
- Local food collection
- Dragon boat races

Valued Partnerships Worldwide

Ten tooling
partners in
the Midwest

Supply partners
in Mexico

Five tooling
partners in China

Supply partners
in China



Bayer



**CINCINNATI
MILACRON**
Innovative Technology

CESARONI DESIGN
product design consultants

BASF
The Chemical Company

سابك
sabic



**BEYOND
DESIGN**



Fanuc
Robotics

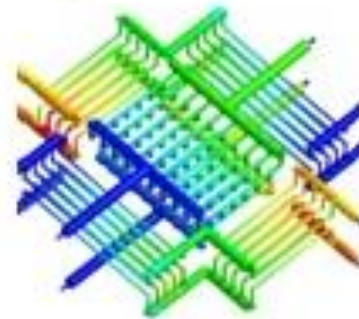
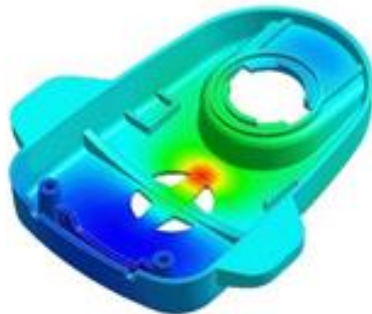
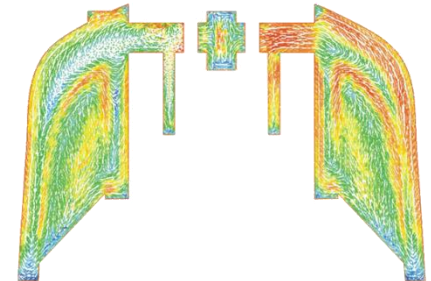
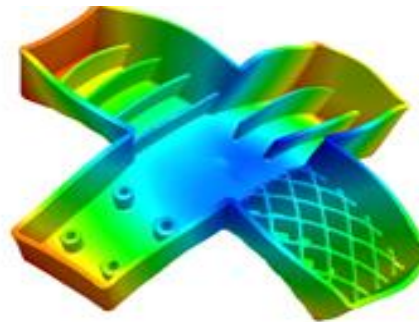
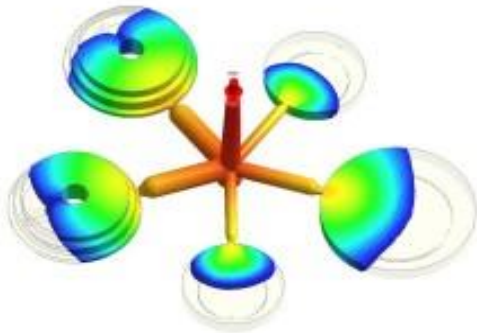
PolyOne



CITADEL

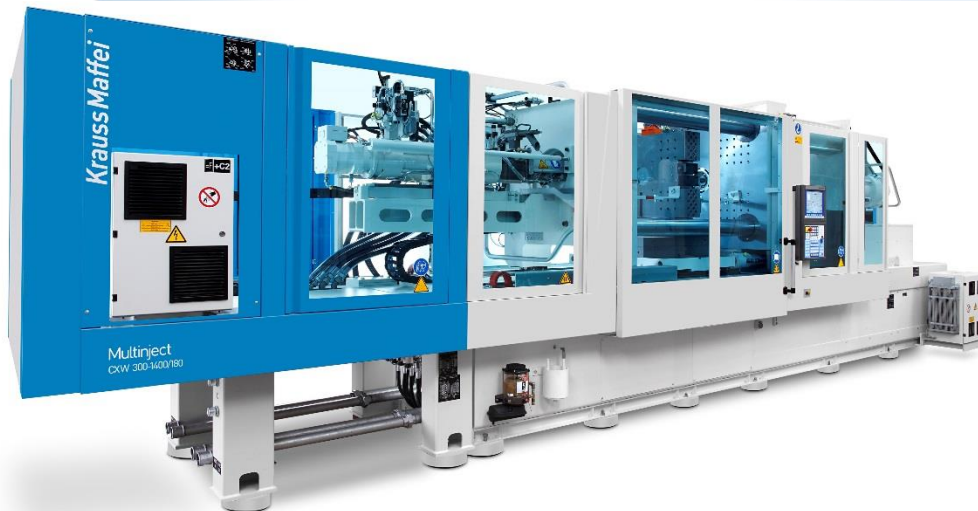
Project Development with Commercial Plastics

IQ, OQ, PQ Validations, Level 5 PPAPs, APQP,
Moldex3D Mold Flow Simulation for Flow, Warp,
Fiber Orientation, Packing & Cooling Analysis.



What's New with Commercial Plastics

- ① New Process Technology – iMFLUX® Green Curve™
- ② Acquisition of Imperial Plastics - April 2020
- ③ 15 new machines at our Kenosha, WI facility
-Tonnage range from 390ton-950ton



www.ecommercialplastics.com

design assistance
molding
assembly
& more



Commercial Plastics



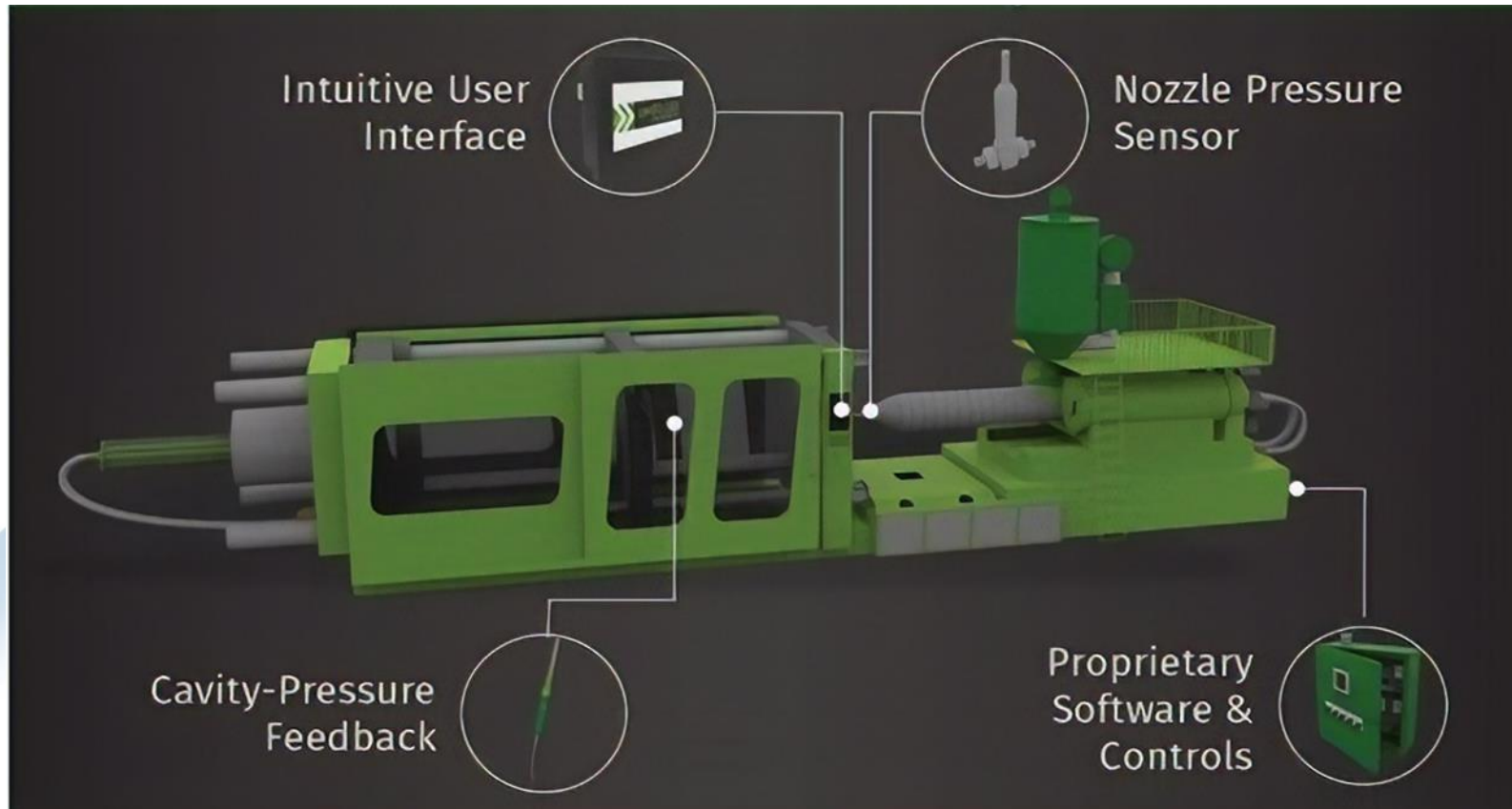
What is iMFLUX® Technology

How the Green Curve™ Achieves Results

LOW PRESSURE INJECTION	NO FLOW HESITATION	MOLD PRESSURE FEEDBACK	PACKS AS IT FILLS
Conventional high-pressure injection molding degrades the plastic quality and puts unnecessary stress on the mold. Consistent low, constant pressure injection protects the material and mold.	The Green Curve™ ensures a constant, steady injection pressure that never lets the material solidify before the cavity is filled, improving part quality.	iMFLUX® software extracts data from our system and automatically adjusts the injection pressure as material viscosity changes.	The slow injection rate allows the plastic to cool as the mold continues to fill, shortening the total cycle time.



iMFLUX® Technology Controls System





Commercial Plastics

www.ecommercialplastics.com

Thank you